



 **MECANIL**

TREE CARE

MECANIL S GENERAL grapple

Mecanil grapple saws are designed and developed for professional use, with features as safety, productivity, strength, easy-to-use, and service-friendliness in mind. These grapple saws can be used on most machines where you can use a normal log grapple without having to do any modifications and with an easy setup. Due to the light weight and the easy installation, the Mecanil grapple saws can be used for many purposes.

Safe way to remove trees in difficult places • No tree climbing • Tree pruning with ease
Tree care around highways, rail roads, water, parks, cemeteries etc.



Thinning and harvesting of energy wood • Forest clearance
Felling of wood around growing fields and roads etc.



MADE EASY

SG-SERIES ATTACHMENT 2 The saws

All models with
wireless control:
**FREE
ROTATION**



"Increase your productivity and
make your machine more profitable
- Choose Mecanil"



Mecanil SG160 G2

Light grapple saw for installation on smaller machines. It is suitable for felling of energy wood and removing of trees and branches, for example in parks etc. It has no need for any extra hydraulics and it works with a low oil flow rate. It is also very easy to install. The RC versions are equipped with wireless control incl. 2 batteries and a battery charger. Wireless control: free rotation.

Suitable for: small knuckleboom cranes, trucks, tractors, small forwarders, small excavators.

	SG160 G2	SG160 RC G2	SG160 A G2	SG160 A RC G2
Collecting unit	No	No	Yes	Yes
Weight	200 kg - 440 lb	220 kg - 485 lb	245 kg - 540 lb	270 kg - 595 lb
Control	Electrical cable, 12V or 24V	Integrated wireless control	Electrical cable, 12V or 24V	Integrated wireless control

All SG160 G2 models

Tilt function	Yes
Grapple size	0,16 m ²
Rec. work. pressure	180-230 bar
Rec. oil flow rate	40-80 l/min. 10-25 GPM
Opening of grapple	925 mm - 36.5"
Attachment rotator	69/30 - 2.7"/1.18"
Hydraulics	2 lines (grapple open/close)
Cutting diameter, saw (16")	-> 350 mm - 16"



Mecanil SG220 G2

Grapple saw that is suitable for felling and removing of trees and branches in difficult places, for example in parks and near power lines etc. It has no need for any extra hydraulics and it works with a low oil flow rate. It is also very easy to install. The RC versions are equipped with wireless control incl. 2 batteries and a battery charger. Wireless control: free rotation.

Suitable for: knuckleboom cranes, telehandlers, trucks, tractors, forwarders, excavators.

	SG220 G2	SG220 RC G2	SG220 A G2	SG220 A RC G2
Collecting unit	No	No	Yes	Yes
Weight	310 kg - 683 lb	330 kg - 727 lb	370 kg - 815 lb	390 kg - 860 lb
Control	Electrical cable, 12V or 24V	Integrated wireless control	Electrical cable, 12V or 24V	Integrated wireless control

All SG220 G2 models

Tilt function	Yes
Grapple size	0,22 m ²
Rec. work. pressure	180-230 bar
Rec. oil flow rate	40-80 l/min. 10-25 GPM
Opening of grapple	1200 mm - 48"
Attachment rotator	173/6
Hydraulics	2 lines (grapple open/close)
Cutting diameter, saw (18")	-> 450 mm - 18"



Mecanil SG280 G2

Grapple saw that is suitable for felling and removing of trees and branches in difficult places, for example in parks and near power lines etc. Also suitable for felling of trees and energy wood. It has no need for any extra hydraulics and it works with a low oil flow rate. It is also very easy to install. The RC versions are equipped with wireless control incl. 2 batteries and a battery charger. Wireless control: free rotation.

Suitable for: knuckleboom cranes, telehandlers, trucks, tractors, forwarders, excavators.

	SG280 G2	SG280 RC G2	SG280 A G2	SG280 A RC G2
Collecting unit	No	No	Yes	Yes
Weight	345 kg - 760 lb	390 kg - 860 lb	420 kg - 925 lb	450 kg - 992 lb
Control	Electrical cable, 12V or 24V	Integrated wireless control	Electrical cable, 12V or 24V	Integrated wireless control

All SG280 G2 models

Tilt function	Yes
Grapple size	0,30 m ²
Rec. work. pressure	180-230 bar
Rec. oil flow rate	60-100 l/min. 15-30 GPM
Opening of grapple	1490 mm - 59"
Attachment rotator	173/6
Hydraulics	2 lines (grapple open/close)
Cutting diameter, standard saw (22")	-> 550 mm (22") - 22" -> 630 mm (25") - 25"

PROFESSIONAL ENERGY WOOD HARVESTING

Mecanil XG220

VERSATILE AND EFFICIENT ENERGY WOOD HEAD WITH BOTH SAW AND CUTTING-UNIT



This is a giant leap forward in professional energy- and small wood harvesting. With this unique head you cut small bushes, twigs and thinner trees with a snap and fell bigger trees using the saw. The head also works perfectly as a traditional loading grapple. The XG220 is a combination of two of the most successful and tried out Mecanil products; Mecanil EG250 energy wood felling head and SG220 grapple saw. The head is very easy to install because of no need for any additional hydraulics.

Mecanil XG220 A RC is equipped with the patented self-powered wireless control. Does not require any change of battery. The battery is charged when the grapple is in use. Wireless control: free rotation.

	XG220 A	XG220 A RC
Tilt function	Yes	Yes
Collecting unit	Yes	Yes
Grapple size	0,22 m ²	0,22 m ²
Weight	390 kg - 860 lb	460 kg - 1015 lb
Rec. working pressure	180-230 bar	180-230 bar
Rec. oil flow rate	60-100 l/min. 15-30 GPM	60-100 l/min. 15-30 GPM
Opening of grapple	1200 mm - 48"	1200 mm - 48"
Attachment rotator	173/6	173/6
Hydraulics	2 lines (pressure/return)	2 lines (pressure/return)
Control	Control via electrical cable 12V or 24V	Wireless control self-powered
Cutting diameter, cutting-unit	max. 200 mm - 8"	max. 200 mm - 8"
Cutting diameter, saw (18")	-> 450 mm - 18"	-> 450 mm - 18"
Suitable for	Tractors Forwarders Harvesters Excavators	Tractors Forwarders Harvesters Excavators

Mecanil EG250

EFFICIENT AND LIGHT ENERGY WOOD FELLING HEAD WITH A CUTTING KNIFE



All Mecanil felling heads also work perfectly as a traditional loading grapple.

The EG250 heads are an efficient combination of a felling head for energy- and small wood and a traditional loading grapple. The head is suitable for all kinds of clearing and thinning operations as well as felling, collecting, handling and loading of trees and bushes etc. Thanks to the normal claws and the knife, even larger bushes and branches can be taken down with one cut. Very easy to install because of no need for any additional hydraulics.

The EG250 A RC is equipped with the patented self-powered wireless control. Does not require any change of battery. The battery is charged when the grapple is in use. Wireless control: free rotation.

	EG250	EG250 A	EG250 A RC
Tilt function	Yes	Yes	Yes
Collecting unit	No	Yes	Yes
Grapple size	0,25 m ²	0,25 m ²	0,25 m ²
Weight	360 kg - 795 lb	410 kg - 905 lb	440 kg - 970 lb
Rec. working pressure	200-230 bar	200-230 bar	200-230 bar
Rec. oil flow rate	40-80 l/min. 10-25 GPM	40-80 l/min. 10-25 GPM	40-80 l/min. 10-25 GPM
Opening of grapple	1450 mm - 57"	1450 mm - 57"	1450 mm - 57"
Attachment rotator	173/6	173/6	173/6
Hydraulics	2 lines (pressure/return)	2 lines (pressure/return)	2 lines (pressure/return)
Control	Control via electrical cable 12V or 24V	Control via electrical cable 12V or 24V	Wireless control self-powered
Cutting diameter, knife	-> 250 mm - 10"	-> 250 mm - 10"	-> 250 mm - 10"
Suitable for	Larger tractors Forwarders Harvesters Excavators	Larger tractors Forwarders Harvesters Excavators	Larger tractors Forwarders Harvesters Excavators

GRAPPLE SAWS AND FELLING GRAPPLES FOR EXCAVATORS

Mecanil SG210 & SG270



**Rotator attachment or
Excavator attachments:
S30, S40, S45, S50,
S60, NTP-10 etc.**

GRAPPLE SAWS WITHOUT TILT - FOR INSTALLATION ON EXCAVATORS ETC.

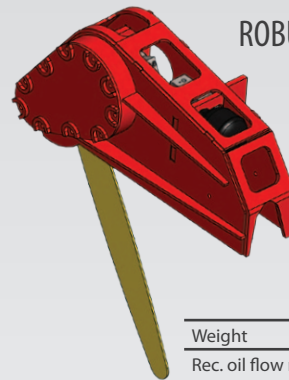
These grapple saws have no tilt function and are suitable for mounting on excavators, but also forest machines and trucks in some cases. SG210 is based on SG220 and SG270 is based on SG280. All these models have the same size and material. SG210 and SG270 are available with different control systems (4 hydr. lines alt. 2 hydr. lines). SG270 is also available as a reinforced version; SG270 HD.

SG210 and SG270 are available with rotator attachment or excavator attachment. Ask for more info about the control systems.

Suitable for: excavators, forest machines, tractors.

	SG210	SG270	SG270 HD (Heavy Duty)
Tilt function	No	No	No
Collecting unit	No	No	No
Grapple size	0,22 m ²	0,30 m ²	0,30 m ²
Weight (from)	235 kg - 518 lb	280 kg - 617 lb	380 kg - 838 lb
Rec. working pressure	180-230 bar	180-230 bar	180-230 bar
Rec. oil flow rate	40-80 l/min. 10-25 GPM	60-100 l/min. 15-30 GPM	60-100 l/min. 15-30 GPM
Opening of grapple	1200 mm - 48"	1490 mm - 59"	1490 mm - 59"
Attachment standard	173/6	173/6	14 bolts
Attachment alternative	Excavator attach.	Excavator attach.	Excavator attach.
Control	4 hydr. lines or 2 hydr. lines + electrical cable or radiocontrol	4 hydr. lines or 2 hydr. lines + electrical cable or radiocontrol	4 hydr. lines or 2 hydr. lines + electrical cable or radiocontrol
Cutting diameter (18")	-> 450 mm - 18"	-> 450 mm - 18"	-
Cutting diameter (22")	-> 550 mm - 22"	-> 550 mm - 22"	-> 550 mm - 22"
Cutting diameter (25")	-	-> 630 mm - 25"	-> 630 mm - 25"

Mecanil SK500



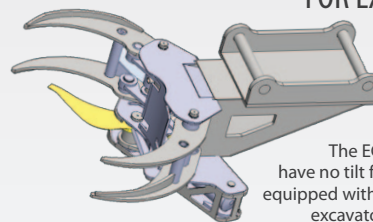
ROBUST SAW CASSETTE FOR TOUGH USE

Make your grapple into a grapple saw. This robust saw unit can be installed on the side of a traditional loading grapple. Needs 2 hydraulic lines.

SK500	
Weight	95 kg - 210 lb
Rec. oil flow rate	50-100 l/min. 13-30 GPM
Cutting diameter (22")	-> 550 mm - 22"
Cutting diameter (25")	-> 630 mm - 25"

Mecanil EG250 EX

ENERGY WOOD HEAD WITH CUTTING-UNIT - FOR EXCAVATORS



The EG250 EX models have no tilt function and are equipped with attachment for excavators, for example, S30, S40, S45, S50, S60, NTP-10 etc. Ask for more information.

OTHER GRAPPLES

Mecanil T220

UNIQUE LOADING GRAPPLE WITH TILT FUNCTION

This grapple is a normal loading grapple with built-in tilt function, but it still works with the same hydraulics as a traditional loading grapple. You only need 2 hydr. lines (grapple open/close).

The tilt function is controlled wirelessly. Two extra control buttons (tilt up/tilt down) are included in the delivery. These control buttons can be installed in a suitable place. 2 pcs. of batteries and a battery charger are also included in the delivery.



T220	
Grapple size	0,22 m ²
Weight	155 kg - 340 lb
Working pressure	200-230 bar
Rec. oil flow rate	appr. 30-50 l/min. appr. 8-14 GPM
Opening of grapple	1200 mm - 48"
Attachment rotator	173/6

Mecanil VG400

PRACTICAL WOOD GRAPPLE

Mecanil VG400 is the pioneer in its kind of market. The modelprotected grapple is planned and developed to improve the handling of, for example fire wood. The grapple manages easily to load, unload and move all kinds of wood. The grapple is simple and light, but gives a clear and versatile result.



VG400	
Size	appr. 400 l - 110 gal.
Weight	155 kg - 340 lb
Length	1100 mm - 43"
Opening of grapple	1150 mm - 45"
Height grapple closed	660 mm - 26"
Distance between claws	90 mm - 3.5"



Mecanil manufactures high quality, safe and easy-to-use grapple saws and felling heads for the tree care and forest industry. Mecanil products are carefully designed and developed for professional use. Mecanil is a family company founded in 1990. We are located in Finland in the small town of Loviisa, Liljendal.

We are dedicated to continually develop our products. By taking into consideration customers opinions, we find new and better solutions which improve our products even more.

Specifications are subject to alteration. Copyright © Mecanil Oy Ab 2016. All rights reserved.



Mecanil Oy Ab, Valtatie 565, 07880 Liljendal, FINLAND
Phone +358 19 661 2600, mecanil@mecanil.fi, www.mecanil.fi

www.mecanilproducts.com

Distributor