

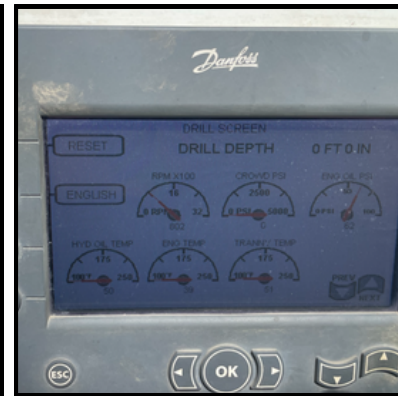
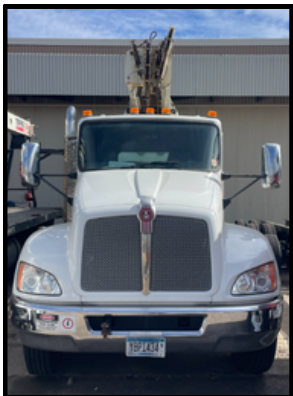


2015 Kenworth STD Cab T-370 Highway FD30 Pressure Digger

\$240,000

Stock Unit: 155272 VIN: 3BKHLJ9X6GF105272 Serial:MO294

DISCLAIMER: Price quoted does NOT include any applicable FET. Quoted price is Ex Works and does NOT include any freight / delivery charges, sales tax, titling fees, or registration fees. Specifications are believed to be correct but may contain errors and/or omissions. Pictures are actual and of chassis & equipment for sale. Description and Images property of ABM Equipment, LLC



Truck Specifications:

Year.....	2015
Make.....	Kenworth
Model.....	T-370
Cab Type.....	Regular Cab
Miles.....	31,370 Approx
Chassis Class.....	Class 5
Engine Make.....	Paccar
Engine.....	PX-9
Engine H.P.....	225
Transmission.....	Allison 300RDS 6 spd
Brakes.....	Disc Air
Engine Fuel Type.....	Diesel
Air conditioning	Yes
Cruise Control	Yes
Trailer Brake	Yes
Controller	Yes
Back up Camera	N/A
4x4	N/A



FD 30 Pressure Digger

- 62,000 ft/lbs of torque
- 18,000 lb. controlled free fall winch with two speed
- 25,000 lbs. crowd force
- 30' digging depth
- Square 3-bar design
- Low profile mast
- Truck or track mounted carrier



Additional Features Included:

Oversized Sheaves
Kelly Bar Roller Drive
Joystick Controls
Digital Display
Solid Inner Kelly
Protected Grease Zerks
Zinc Plated Components
Adjustable Tie Down Blocks
Sealed Sheave Bearings
Controlled Free Fall Winch
Adjustable Slewing Gear
CAN Bus Diagnostics
Boom Mounted Winches
Drop Case Gear Reduction

Financing Available Through ABM Capital Call us Today!

