



An Oshkosh Corporation company



# DOMINATOR® IV

## Mechanics Body

With enhanced strength and stability for higher crane loads, numerous configuration possibilities, and a body rating of 95,000 ft-lb (13.3 tm), the Dominator IV mechanics truck offers exceptional performance in virtually any industry. With the Dominator IV mechanics truck, you don't have to bring your equipment into the shop for service, because the shop comes to you.

### > BASE BODY SPECIFICATIONS

<b>Body Size</b>	14' (4.3 m)	14' (4.3 m)	14' (4.3 m)	14' (4.3 m)	19' (5.8 m)	19' (5.8 m)
<b>Body Configuration<sup>1</sup></b>	LH, RF RSD	LF, RF RSD	LHAR, RH RSD	RF, LH RSD	LH, RH	RF RSD
<b>Body Rating</b>	95,000 ft-lb (13.3 tm)	95,000 ft-lb (13.3 tm)	95,000 ft-lb (13.3 tm)	95,000 ft-lb (13.3 tm)	95,000 ft-lb (13.3 tm)	95,000 ft-lb (13.3 tm)
<b>Body Weight<sup>2,3</sup></b>	5758 lb (2611.8 kg)	5827 lb (2643.1 kg)	5907 lb (2679.3 kg)	5873 lb (2663.9 kg)	7343 lb (3330.7 kg)	7279 lb (3301.7 kg)
<b>Body Width</b>	98" (2.5 m)	98" (2.5 m)	98" (2.5 m)	98" (2.5 m)	98" (2.5 m)	98" (2.5 m)
<b>GVWR</b>	33,000+	33,000+	33,000+	33,000+	33,000+	33,000+
<b>Storage Capacity<sup>3</sup></b>	203.8 ft <sup>3</sup> (5.8 m <sup>3</sup> )	225.4 ft <sup>3</sup> (6.4 m <sup>3</sup> )	219.6 ft <sup>3</sup> (6.2 m <sup>3</sup> )	211.6 ft <sup>3</sup> (6 m <sup>3</sup> )	281.1 ft <sup>3</sup> (8 m <sup>3</sup> )	268.7 ft <sup>3</sup> (7.6 m <sup>3</sup> )
<b>Angle of Departure</b>	14°	14°	14°	14°	14°	14°
<b>Chassis CA<sup>4</sup></b>	120" (3.0 m)	120" (3.0 m)	120" (3.0 m)	120" (3.0 m)	150" (3.8 m)	150" (3.8 m)
<b>Max. IMT Crane Model</b>	14000 30'	14000 30'	14000 30'	14000 30'	14000 30'	14000 30'

<sup>1</sup> Standard (STD) = 52", Raised (RSD) = 60". <sup>2</sup> Includes doors, side packs, workbench. <sup>3</sup> Body weight and storage capacity are estimated based on product configuration.

<sup>4</sup> Does not include welder deck.



## > STANDARD FEATURES



- IMT CMD.CTRL™
- IMT Patented Inverted A-Frame Design
- Complete System Integration Including Body, Crane, and Compressor
- Three-Point Access Package
- Automotive-style Electrical Harnessing
- IMT Compartment Coating (VOC-compliant polyurethane modified multicolor spray finish)
- Workbench Bumper with Through Compartment



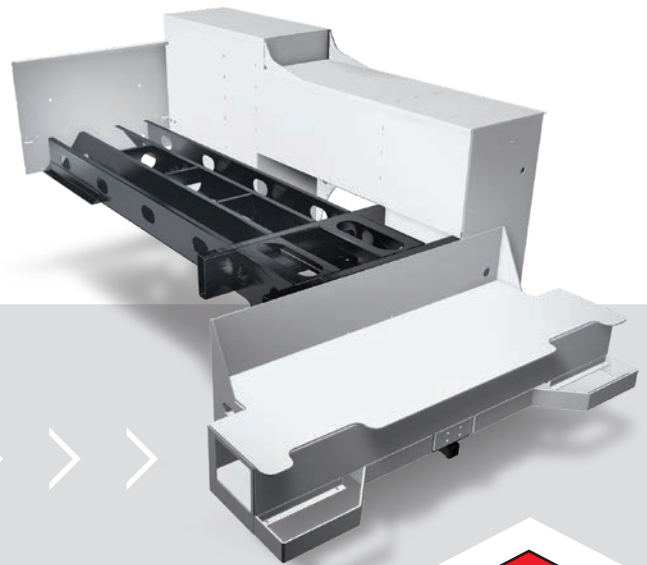
**COMPLETE REMOTE CONTROL**  
Control your chassis, crane functions, service body components and air compressor remotely. IMT CMD.CTRL™ combines strong, reliable hardware with flexible, intuitive software to give operators a productive, user-friendly experience.

## > OPTIONS

- High-Intensity LED Lighting Package
- Axalta Bedliner
- Drawer Sets, Adjustable Shelves
- 3" (7.6 cm) Divided Adjustable Shelves
- Lightweight, Adjustable Bolt Bins
- Rear Stabilizers – Hydraulic
- Front Stabilizers – Hydraulic
- Workbench Vises and Vise Plates
- Compartment Pressurization System
- Compressed Air and Welding Systems
- Headache Rack
- Telescopic Roof
- Master Lock System



**HIGH-INTENSITY LED LIGHTING**  
LED light bars provide superior light penetration for enhanced visibility.



## BODY SUBSTRUCTURE

Patented A-Frame design with integrated crane box is engineered for maximum strength and weight reduction.



An Oshkosh Corporation company

**NOTHING SAYS COMMITMENT LIKE THE DIAMOND.™**

Iowa Mold Tooling Co., Inc. | 500 Highway 18 West | Garner, Iowa 50438 | 800-247-5958 | [imt.com](http://imt.com)

IMT reserves the right to make changes in engineering, design, and specifications; add improvements; or discontinue manufacturing at any time without notice or obligation. IMT, the IMT logo, Dominator, NOTHING SAYS COMMITMENT LIKE THE DIAMOND and SiteStar are registered trademarks or trademarks of Iowa Mold Tooling Co., Inc., Garner, IA, USA. © 2022 Iowa Mold Tooling Co., Inc. All Rights Reserved.

