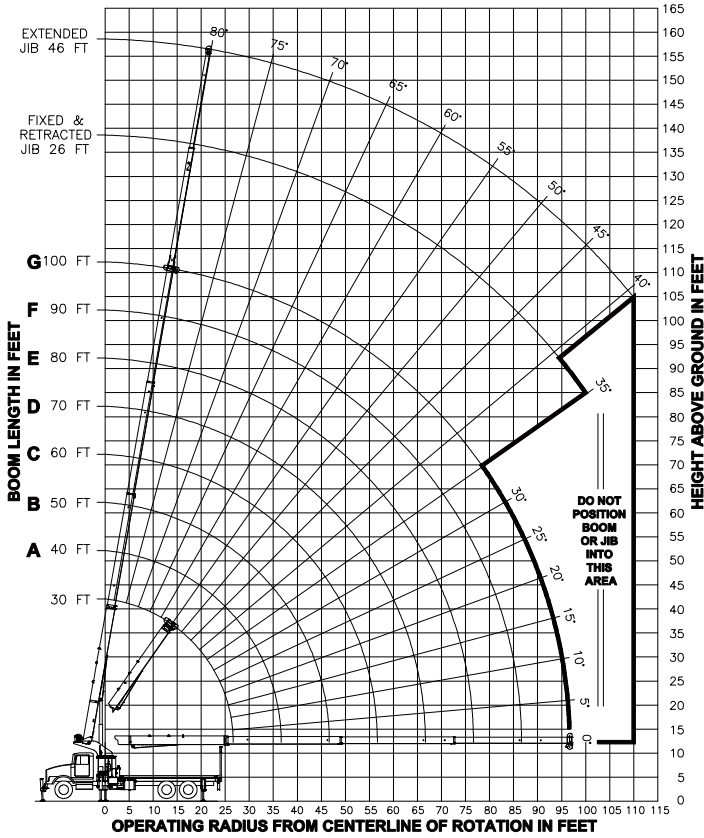


**RANGE DIAGRAM
- FULL SPREAD CONFIGURATION -**



LOAD RATINGS IN LBS WITH OUTRIGGERS AND STABILIZERS EXTENDED

LMI CODE #1

BOOM LENGTH IN FEET	BOOM ANGLE							OUTRIGGERS AND STABILIZERS EXTENDED								
	LMI CODE #1							FIXED JIB			TELESCOPIC JIB					
	30 FT	40 FT	50 FT	60 FT	70 FT	80 FT	90 FT	100 FT	LMI CODE #2	LMI CODE #3	LMI CODE #4	JIB LENGTH FOR ALL BOOM LENGTHS - SEE WARNING NOTE 4	JIB LENGTH FOR ALL BOOM LENGTHS - SEE WARNING NOTE 4	JIB LENGTH FOR ALL BOOM LENGTHS - SEE WARNING NOTE 4		
5	77	60000										26 FT	26 FT	46 FT		
8	71	38800														
10	67	33900	73	25000	77	25000										
12	62	29830	70	25000	75	25000	78	25000								
15	55	25700	66	23930	71	22710	75	21850	78	20190	80	16860				
20	42	20350	57	19060	65	17980	70	17550	74	16930	76	14660	79	12470		
25	22	15880	48	16030	58	15140	65	14410	69	13840	73	12850	75	11080		
30			36	13350	51	12830	59	12200	65	11670	69	11250	72	9770		
35			19	10360	43	10630	53	10530	60	10060	65	9670	69	8630		
40					33	8240	47	8390	55	8490	61	8560	66	7910		
45					18	6520	39	6690	50	6780	57	6850	62	6900		
50							33	5410	44	5510	52	5580	58	5630		
55							18	4410	37	4520	47	4590	54	4640		
60									28	3730	41	3800	49	3850		
65									16	3080	35	3160	45	3210		
70											27	2620	39	2670		
75											15	2160	34	2220		
80												26	1830	38	1870	
85												15	1480	32	1530	
90														25	1230	
95														14	960	
100															100	39
105															105	43
110															110	80

490 LBS	370 LBS	300 LBS	250 LBS	210 LBS	190 LBS	170 LBS	150 LBS	DEDUCTIONS FOR STOWED FIXED JIB
730 LBS	550 LBS	440 LBS	370 LBS	320 LBS	280 LBS	250 LBS	220 LBS	DEDUCTIONS FOR STOWED TELESCOPIC JIB

WARNING

- THE OPERATOR MUST READ AND UNDERSTAND THE OWNER'S MANUAL BEFORE OPERATING THIS CRANE.
- POSITIONING OR OPERATION OF CRANE BEYOND AREAS SHOWN ON THIS CHART IS NOT INTENDED OR APPROVED EXCEPT WHERE SPECIFIED IN OWNER'S MANUAL.
- LOADED BOOM ANGLES AT SPECIFIED BOOM LENGTHS GIVE ONLY AN APPROXIMATION OF THE OPERATING RADIUS. THE BOOM ANGLE BEFORE LOADING SHOULD BE GREATER TO ACCOUNT FOR DEFLECTIONS. DO NOT EXCEED THE OPERATING RADIUS FOR RATED LOADS.
- THE OPERATING RADIUS SHOWN IN THE JIB RATING CHART IS FOR FULLY EXTENDED BOOM ONLY. WHEN BOOM IS NOT FULLY EXTENDED, USE ONLY LOADED BOOM ANGLE TO DETERMINE LOAD RATING OF JIB.
- BOOM MUST BE FULLY RETRACTED WHEN JIB IS ERECTED, BEFORE LOWERING BOOM THRU THIS AREA.
- FOR BOOM ANGLES NOT SHOWN ON JIB LOAD RATING CHART, USE RATING OF NEXT LOWER BOOM ANGLE.
- FOR BOOM LENGTHS NOT SHOWN, USE RATING OF NEXT SHORTER OR LONGER BOOM LENGTH, WHICHEVER IS LESS. FOR RADII NOT SHOWN, USE RATING OF NEXT LONGER RADIUS.
- CRANE LOAD RATINGS ON OUTRIGGERS ARE BASED ON FREELY SUSPENDED LOADS WITH THE MACHINE LEVELED AND STANDING ON A FIRM UNIFORM SUPPORTING SURFACE. NO ATTEMPT SHALL BE MADE TO MOVE A LOAD HORIZONTALLY ON THE GROUND IN ANY DIRECTION.
- PRACTICAL WORKING LOADS DEPEND ON SUPPORTING SURFACE, WIND, AND OTHER FACTORS AFFECTING STABILITY SUCH AS HAZARDOUS SURROUNDINGS, EXPERIENCE OF PERSONNEL, AND PROPER HANDLING, ALL OF WHICH MUST BE TAKEN INTO ACCOUNT BY THE OPERATOR.
- THE MAXIMUM LOAD WHICH MAY BE TELESCOPED IS LIMITED BY HYDRAULIC PRESSURE, BOOM ANGLE, AND BOOM LUBRICATION. IT IS SAFE TO ATTEMPT TO TELESCOPE ANY LOAD WITHIN THE LIMITS OF THE LOAD RATING CHART. BOOM MUST BE FULLY RETRACTED AGAINST BOOM STOPS AT ALL TIMES WHEN LIFTING MINIMUM BOOM LENGTH CAPACITY LOADS.

INFORMATION

- DEDUCTIONS MUST BE MADE FROM RATED LOADS FOR STOWED JIB, OPTIONAL ATTACHMENTS, HOOKS, AND LOAD-BLOCKS (SEE DEDUCTION CHART). WEIGHTS OF SLINGS AND ALL OTHER LOAD HANDLING DEVICES SHALL BE CONSIDERED A PART OF THE LOAD.
- CRANE LOAD RATINGS WITH OUTRIGGERS ARE BASED ON OUTRIGGERS AND STABILIZERS EXTENDED AND SET WITH MACHINE LEVELED.
- LOAD RATINGS ABOVE THE HEAVY LINE ARE STRUCTURALLY LIMITED CAPACITIES. LOAD RATINGS BELOW THE HEAVY LINE ARE STABILITY LIMITED CAPACITIES AND DO NOT EXCEED 85% OF TIPPING.

DEFINITIONS

- OPERATING RADIUS IS THE HORIZONTAL DISTANCE FROM THE AXIS OF ROTATION TO THE CENTER OF THE VERTICAL HOIST LINE OR TACKLE WITH LOAD APPLIED.
- LOADED BOOM ANGLE AS SHOWN IN THE COLUMN HEADED BY \angle , IS THE INCLUDED ANGLE BETWEEN THE HORIZONTAL AND LONGITUDINAL AXES OF THE BOOM BASE AFTER LIFTING RATED LOAD AT RATED RADIUS.

LMI OPERATING CODES

SETTING	CRANE CONFIGURATION	SETTING	CRANE WITH PERSONNEL LIFTING PLATFORM
#1	MAIN BOOM	#5	PERSONNEL LIFTING PLATFORM ON MAIN BOOM
#2	FIXED JIB	#6	PERSONNEL LIFTING PLATFORM ON FIXED JIB
#3	TELESCOPIC JIB-RETRACTED	#7	PERSONNEL LIFTING PLATFORM ON TELESCOPIC JIB-RETRACTED
#4	TELESCOPIC JIB-EXTENDED	#8	PERSONNEL LIFTING PLATFORM ON TELESCOPIC JIB-EXTENDED

ALLOWABLE LINE PULL

1 PART	2 PART	3 PART	4 PART	5 PART	6 PART	7 PART
8500 LBS	17000 LBS	25500 LBS	34000 LBS	42500 LBS	51000 LBS	60000 LBS
7700 LBS	15400 LBS	23100 LBS	30800 LBS	38500 LBS	46200 LBS	53900 LBS

WARNING

ANTI-TWO-BLOCK SYSTEM MUST BE IN GOOD OPERATING CONDITION BEFORE OPERATING CRANE.

REFER TO THE OWNER'S MANUAL.

KEEP AT LEAST 3 WRAPS OF LOAD LINE ON THE DRUM AT ALL TIMES.

9/16" 6X25 IWRC (3.5:1 SF) - 29750 LBS MIN BREAKING STRENGTH

9/16" ROT RESISTANT (5.0:1 SF) - 38500 LBS MIN BREAKING STRENGTH

DEDUCTIONS FROM RATED LOADS FOR LOAD HANDLING DEVICES SUPPLIED BY MANITEX

AUXILIARY BLOCK	50 LBS
AUXILIARY SHEAVE	50 LBS
OVERHAUL BALL	SEE OVERHAUL BALL MFR. NAMEPLATE
LOAD BLOCK	SEE BLOCK MFR. NAMEPLATE
HOSE REEL	140 LBS
SWING AROUND JIB	SEE LOAD CHART

WARNING
LIFTING OFF THE MAIN BOOM POINT WHILE THE JIB IS ERECTED IS NOT INTENDED OR APPROVED.

MODEL 30100C

CRANE MEETS ANSI B30.5 REQUIREMENTS

7300096-025 NR

