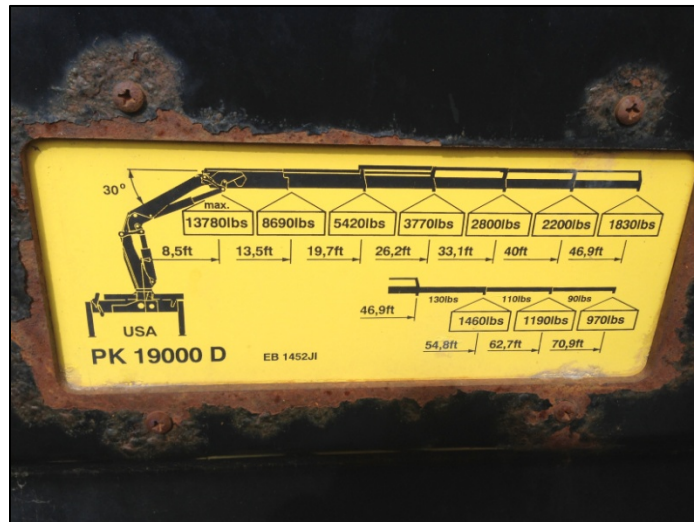


Custom Truck Equipment for the Utility, Construction, Municipal and Refuse Industries



ABM Equipment & Supply Crane Specification Sheet

Chassis Make		Axle Lock		Model	PK 19000 D
Model		Brakes		Year	1997
Serial #		Wheel Base		Serial #	9783497
Year		Cab To Axle		Capacity Rating	131,610 ft/lbs
Mileage		A/C		Horizontal Reach	48'2"
Engine		Radio		Vertical Reach	Based on mount height
Horse Power		Seats		Manual Extensions	No
Engine Brake		Fuel Tank(s) Capacity		Auxiliary Jib	No
Transmission		Trailer Package		Hose Reel	No
GVWR		Pusher Axle		Hyd's To Boom Tip	No
Front Axle Rating		Pusher Axle Tires		Rotation	400 degrees
Rear Axle Rating		Tag Axle		Controls	Ground
Front Tire Size		Tag Axle Tires		Main Outriggers	Hydraulic out & down
Rear Tire Size		Auxiliary Throttle		Auxiliary Outriggers	
Front Tire % Good		PTO Type		Useable Bed Space	
Rear Tire % Good		Pump Type		Bed Construction	
Differential Lock		Equipment Make	Palfinger	Tool Boxes	

Extras:

Palfinger PK 19000D knuckle boom crane. "Crane Only" 1,830 #'s @ 46'9"

Unit #: C-2064